



BRACKENRIDGE ESTATE

ENVIRONMENTAL CONTROL OFFICER REPORT

Report: #9

Period: 1 March to 31 March 2025

Date: 31 March 2025

Author: Kellyn Whitehead, MSc / ECO Brackenridge Estate



TABLE OF CONTENTS

Overview	3
Fire management	4
Invasive Alien Control	5
Open spaces	7
Appendix A	9
Appendix B	11
Appendix C	14
Appendix D	15

The aim of this report is to document the deliverables agreed upon between the Homeowners Association (HOA), the Environmental Management Committee (EMC) and the Environmental Control Officer (ECO) to ensure the proper management of Brackenridge.

The report will be updated every month by the ECO, detailing the action plans for each deliverable, what has been achieved, what still needs to be completed and any recommendations for both estate management and homeowners.

All environmental management on the estate will be done in accordance with the Environmental Audit conducted by Professor Patricia Holmes in October 2023 and the updated Environmental Management Plan drawn up in October 2023.

Any new environmental concerns that are discovered during maintenance, or any changes found regarding the guidelines of the environmental audit, will be communicated in this report.

Any concerns or questions that homeowners may have in reference to environmental management can be addressed to either the General Manager or the ECO.

General Manager

manager@brackenridge.co.za

044 533 6547

Kellyn Whitehead, ECO

kellynwhitehead4@gmail.com

044 533 6547

ACTION POINT: Prescribed burns.

RELEVANCE: Regeneration and maintenance of endangered Garden Route Shale Fynbos; help circumvention of wildfires.

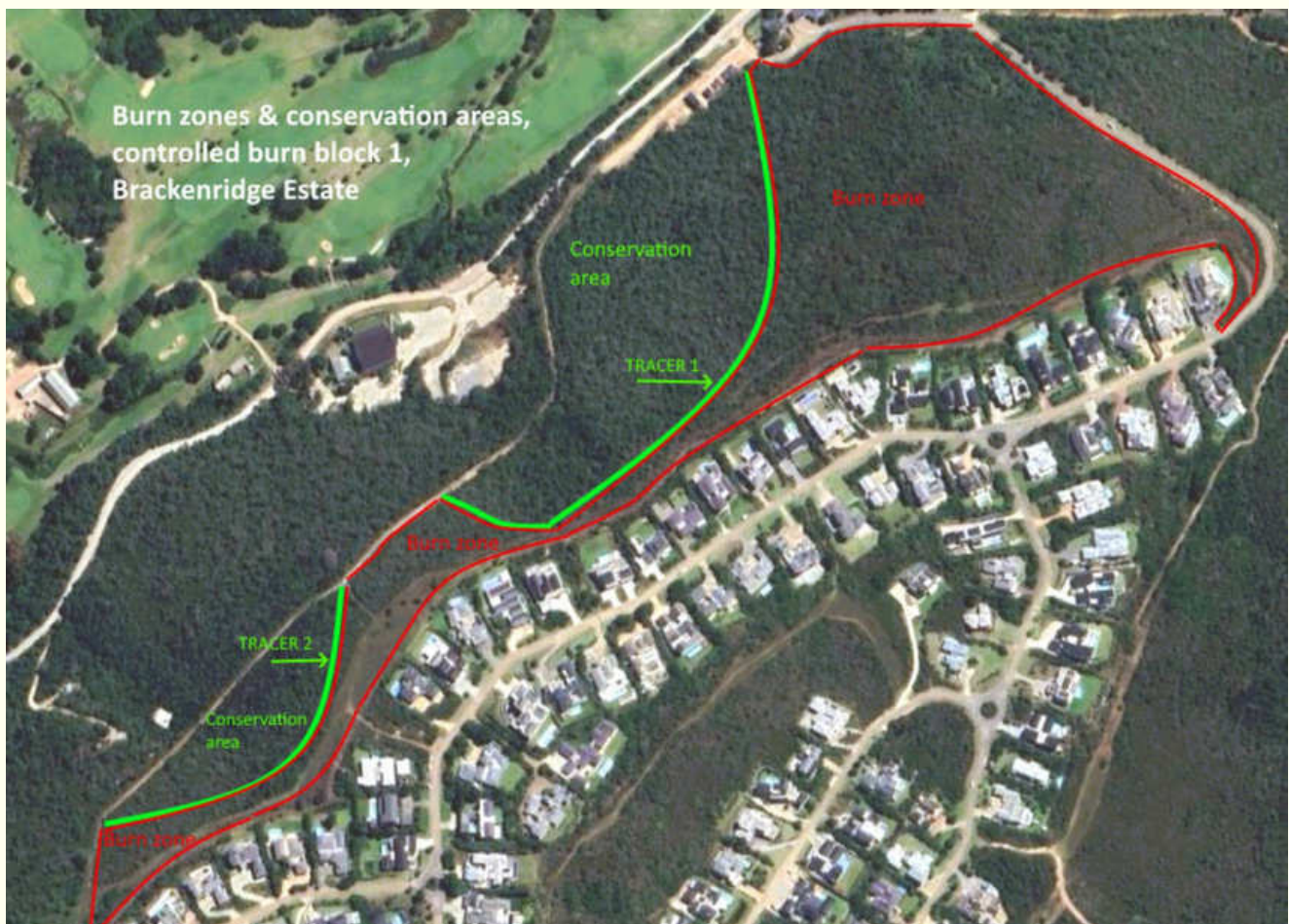
DELIVERABLES: Invasive alien control, fire belt cutting, permits, fuel reduction, prescribed burn, mopping up.

- Please refer to EMP, page 9 - 12 for more details.

Pre-burn preparation for Block 1 (11.8 ha).

The Working on Fire (WoF) team completed cutting down tall vegetation to waist height as well as cutting down the alien vegetation. The fire break had regrowth of grass and larger shrubs since it was cut in January. Home from Home assisted with cutting back the grass, removing the larger shrubs and removing stumps.

An additional two tracer lines will be laid out in block 1 to protect two forest patches that have been identified. This will be done before the scheduled burn in April.



ACTION POINT: Control growth and spread of invasive plant species.

RELEVANCE: Restoration of native ecosystems.

DELIVERABLES: Invasive alien control, Integrated Fire and Alien Species Management Plan.

- Please refer to EMP, page 13 for more details.

The local alien invasive species (AIS) clearing team have completed removing AIS in section four and section five. These sections contained large specimens of pine, Black wattle, Rooikrans and Port Jackson.

Due to their size, the team could not cut down some of the large specimens and instead ring barked and poisoned them. This will prevent further growth and the trees will die over a period of time.

The HOA, Environmental Control Officer and Environmental Management Committee are very happy with the work ethic and precision of the team and they hope to be able to use their skills for future areas earmarked for clearing.

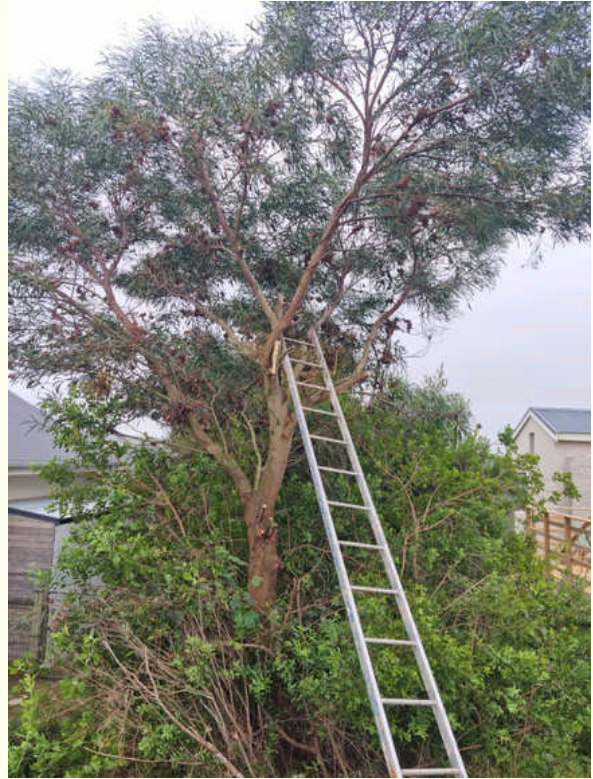
In block 6 there was an area of young Black wattles that the AIS clearing team removed in February. This area has had a regrowth of wattle which will need to be addressed. We will wait for the seedlings to reach a certain height after which we will spray them with herbicide. This is the most effect way to tackle the situation.

AIS follow up will continue in block 5 and 6 and block 1 will be added to the rotation once it has been burnt.

We would like to thank the homeowners of 3 Erica Heath who removed three large Port Jackson from their property. If homeowners are concerned that they may have AIS on their property, please contact the ECO and she will due an inspection for you and assist you with the removal process.

INVASIVE ALIEN CONTROL

Alien invasive removal by 3 Erica Heath.



ACTION POINT: Maintain open spaces to standard specified in the approval of the site development plan.

RELEVANCE: Open spaces are aesthetically pleasing and ecologically viable.

DELIVERABLES: maintenance of roads, services and pedestrian network, erosion control, waste, and litter control.

- Please refer to EMP, page 14 - 15 for more details.

At the beginning of the month Eldred and his team dropped pile of bark chip at the entrances of some of the pathways. The Home from Home team have spread the chips along the beginning of each path to neaten up the entrances of the pathways.

Most of the signage for the pathways, fire-breaks and maintenance roads has been put up by Eldred's team. These signs designate areas for walking, running and cycling, as well as the fire-breaks. Some of the signs have meanwhile shown defects due to sun damage; these will be replaced in due course.

Eldred has placed more compost along the side of the reservoir and Ricky and his team have planted more Bitou. All sides of the reservoir have now been covered, apart from the entrance, which needs to remain open for access.

Wood chips at pathways.



Appendix A

Block 5 pre-burn plant species list

SCIENTIFIC NAME	COMMON NAME	COMMENTS
<i>Acacia cyclops</i>	Rooikrans	Invasive
<i>Buddleja salciifolia</i>	Sagewood	
<i>Centella asiatica</i>	Asian pennywort	
<i>cf Carpobrotus</i>	Sourfig	Awaiting ID
<i>cf Gnidia</i>	Cape saffron	Awaiting ID
<i>cf Restio</i>	True Cape reeds	Awaiting ID
<i>cf Satyrium</i>	Satyr orchid	Awaiting ID
<i>Chironia baccifera</i>	Christmas berry	Endemic to SA
<i>Chloris gayana</i>	Rhodes grass	
<i>Cliffortia stricta</i>	Staid Cape rose	Endemic to Fynbos
<i>Colpoon compressum</i>	Cape sumach	
<i>Erica canaliculata</i>	Hairy grey heather	Endemic to Fynbos
<i>Eriocephalus africanus</i>	Wild rosemary	Endemic to SA
<i>Euryops virgineus</i>	Virgin true-eye	Endemic to SA
<i>Haemanthus sanguineus</i>	Smooth bloodlily	Endemic to SA

Appendix A

SCIENTIFIC NAME	COMMON NAME	COMMENTS
<i>Helichrysum cymosum</i>	Fume everlasting	Endemic to SA
<i>Helichrysum foetidum</i>	Stinking everlasting	Endemic to SA
<i>Helichrysum petiolare</i>	Silver everlasting	Endemic to SA
<i>Hippia frutescens</i>	Scrambling stinkals	Endemic to SA
<i>Leucadendron salignum</i>	Common sunshine conebrush	Endemic to Fynbos
<i>Metalasia acuta</i>	Pointy blombos	Endemic to Fynbos
<i>Metalasia pungens</i>	Stink blombos	Endemic to Fynbos
<i>Osteospermum monolifera</i>	Bietou bush	Endemic to WC
<i>Oxalis imbricata</i>	Tile sorrel	Endemic to SA
<i>Passerina corymbosa</i>	Common gonna	Endemic to SA
<i>Pinus sp.</i>	Pine	Invasive
<i>Podalyria burchelli</i>	Hairy Cape sweetpea	Endemic to Fynbos
<i>Selago canescens</i>	Skinny bitterbush	Endemic to Fynbos
<i>Selago corymbosa</i>	Stiff bitterbush	Endemic to Fynbos
<i>Seriphium plumosum</i>	Common snake bush	
<i>Sersia lucida</i>	Blinktaaibos	

Appendix B

Block 6 pre-burn plant species list

SCIENTIFIC NAME	COMMON NAME	COMMENTS
<i>Anthanasia dentata</i>	Geel Blombos	Endemic to Fynbos
<i>Aspalathus ciliaris</i>	Fringe Cape gorse	Endemic to Fynbos
<i>Asaragus asparagoides</i>	Bridal asparagus	
<i>Burchellia bubalina</i>	Wild pomegranate	
<i>Centella asiatica</i>	Asian pennywort	
<i>cf Anthospermum</i>		Awaiting ID
<i>cf Asteriodae</i>	Daisy	Awaiting ID
<i>cf Carpobrotus</i>	Sourfig	Awaiting ID
<i>Chironia baccifera</i>	Christmas berry	Endemic to SA
<i>Cliffortia stricta</i>	Staid Cape rose	Endemic to Fynbos
<i>Colpoon compressum</i>	Cape sumach	
<i>Cyrtanthus contractus</i>	Common fire lily	
<i>Diospyros dichrophylla</i>	Poison star apple	
<i>Erica canaliculata</i>	Hairy grey heather	Endemic to Fynbos
<i>Erica peltata</i>	Shield heath	Endemic to Fynbos
<i>Grewia occidentalis</i>	Common cross berry	

Appendix B

SCIENTIFIC NAME	COMMON NAME	COMMENTS
<i>Halleria lucida</i>	Tree fuchsia	
<i>Helichrysum cymosum</i>	Fume everlasting	Endemic to SA
<i>Helichrysum foetidum</i>	Stinking everlasting	Endemic to SA
<i>Helichrysum petiolare</i>	Silver everlasting	Endemic to SA
<i>Hippia frutescens</i>	Scrambling stinkals	Endemic to SA
<i>Hypoxis villosa</i>	Shaggy star grass	
<i>Leucadendron salignum</i>	Common sunshine conebrush	Endemic to Fynbos
<i>Metalasia acuta</i>	Pointy blombos	Endemic to Fynbos
<i>Metalasia pungens</i>	Stink blombos	Endemic to Fynbos
<i>Monopsis unidentata</i>	Wild violet	Endemic to SA
<i>Nidorella ivifolia</i>	Oven bush	
<i>Nidorella ulmifolia</i>	Ulm vleiwed	
<i>Osteospermum monolifera</i>	Bietou bush	Endemic to WC
<i>Oxalis imbricata</i>	Tile sorrel	Endemic to SA
<i>Oxalis purpurea</i>	Purple sorrel	Endemic to SA
<i>Passerina corymbosa</i>	Common gonna	Endemic to SA

Appendix B

SCIENTIFIC NAME	COMMON NAME	COMMENTS
<i>Pinus sp.</i>	Pine	Invasive
<i>Plecostachys serpyllifolia</i>	Petite-licorice	Endemic to SA
<i>Podalyria burchelli</i>	Hairy Cape sweetpea	Endemic to Fynbos
<i>Psoralea axillaris</i>	Violet-flash fountain bush	Endemic to SA
<i>Rapanea melanophloeos</i>	Cape beech	
<i>Selago canescens</i>	Skinny bitterbush	Endemic to Fynbos
<i>Selago corymbosa</i>	Stiff bitterbush	Endemic to Fynbos
<i>Seriphium plumosum</i>	Common snake bush	
<i>Sersia lucida</i>	Blinktaaibos	
<i>Sideroxylon inerme</i>	White milkwood	Protected
<i>Struthiola hirsuta</i>	Shaggy Cape spray	Endemic to Fynbos
<i>Tarchonanthus littoralis</i>	Coastal camphor bush	Endemic to SA
<i>Tecomaria capensis</i>	Cape honeysuckle	
<i>Westringia fruticosa</i>	Coastal rosemary	

Appendix C

Block 5 post-burn plant species list

SCIENTIFIC NAME	COMMON NAME	COMMENTS
<i>Disa bracteata</i>	Bract orchid	Endemic to Fynbos
<i>Fumaria muralis</i>	Wall fume	Introduced - weed
<i>Hibiscus trionum</i>	Flower-of-an-hour	
<i>Pelargonium grossularoides</i>	Coconut stroksbill	
<i>Satryium membranaceum</i>	Membrane orchid	Endemic to Fynbos
<i>Selago spp.</i>		
<i>Senecio pterophorus</i>	Garden Route ragwort	

Appendix D

Block 6 post-burn plant species list

SCIENTIFIC NAME	COMMON NAME	COMMENTS
<i>Dipogon lignosus</i>	Cape sweet pea	
<i>Disa bracteata</i>	Bract orchid	Endemic to Fynbos
<i>Fumaria muralis</i>	Wall fume	Introduced - weed
<i>Hibiscus trionum</i>	Flower-of-an-hour	
<i>Hypoxis angustifolia</i>	Narrow stargrass	
<i>Ixia orientalis</i>	Eastern kalossie	Endemic to SA
<i>Pelargonium grossularoides</i>	Coconut storksbill	
<i>Senecio pterophorus</i>	Garden Route ragwort	